

MODIFICATION SHEET NO. RDSO/WAM4/157**Modification in insulating ring (1218, 1219) fixing arrangement.****1. OBJECT**

Railways have reported a few case of flashing over inside the selector housing assembly of tap changers. Investigations have shown that one of the reason for the flashing was intermediate contact terminals were touching the insulating ring. In case of copper deposition the chances of creepage between taps are more. In order to increase the path it is decided to provide an additional machined washers in between insulating ring (1218, 1219) and fixing contact terminal (1208, 1209).

2. WORK TO BE CARRIED OUT

- Dismantle the contact plate assembly.
- Replace the existing special bolt (1221) of 22 mm length with 24 mm length.
- Provide No.1 mm additional machined washer zinc plated $\phi 6.4 \times \phi 14 \times 1$ in between insulating ring and the stud at the screwing points.
- Reassemble the contact plate.

3. APPLICATION TO CLASS OF LOCOMOTIVES

All classes of locos provided with No. 32 tap changers.

4. MATERIAL REQUIRED

Special bolt (1221) of length 24 mm - 11 Nos.. machined washer zinc plated $\phi 6.4 \times \phi 14 \times 1$ - 11 Nos..

5. MATERIAL REQUIRED SURPLUS

Existing special bolt (1221) - 11 Nos..

6. REFERENCE

HBB Sketch No. TC - 118

7. MODIFICATION DRAWING

RDSO Drg. SK EL 3962

8. AGENCY OF IMPLEMENTATION

- (1) All electric loco sheds and POH shops
- (2) Incorporated by HBB from tap changer Sr. No. IB 41088024 onwards.

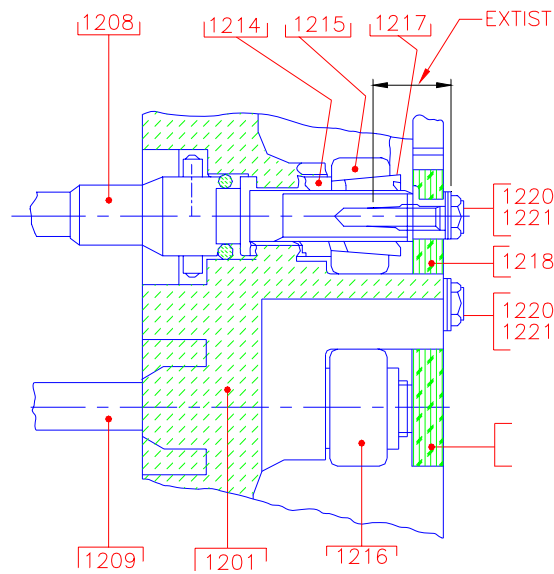
9. **DISTRIBUTION**

As per list attached.

A handwritten signature in red ink, appearing to be 'S. S. Khurana', with a long horizontal line extending to the right.

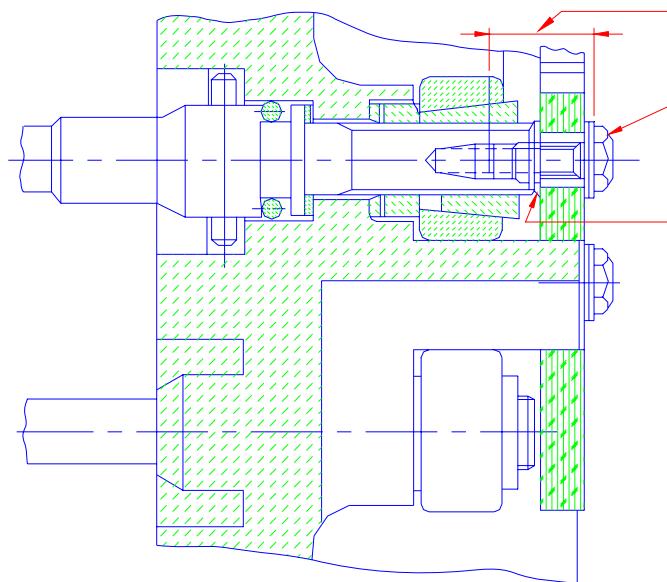
Encl : Drg. No. SK EL 3962
Mailing list.

(S. S. Khurana)
for Director General/Elect.



EXISTING DESIGN

PART NO.	LENGTH=22mm. DESCRIPTION
1201	CONTACT PLATE
1208	CONTACT TERMINAL (INNER)
1209	CONTACT TERMINAL (OUTER)
1214	SPECIAL NUT
1215	CONTACT SEGMENT (INNER)
1216	CONTACT SEGMENT (OUTER)
1217	CONICAL NUT
1218	INSULATING RING COMPL.(INNER)
1219	INSULATING RING COMPL.(OUTER)
1220	BELLEVILLE SPRING WASHER $\phi 6.4/14$
1221	SPECIAL BOLT



MODIFIED DESIGN

MODIFIED SPECIAL BOLT P.NO.1221
LENGTH=24mm.
MODIFIED SPECIAL BOLT P.NO.1221
ADDITIONAL MACHINED WASHER
 $\phi 6.4/14 \times 1$ ZINC PLATED

REF :- HBB SK.NO. TC-1183

SCALE:- NTS

APPROVED:-

FOR D.G.

MODIFIED CONTACT PLATE ASSEMBLY OF TAP CHANGER NO 32

RDSO.ELEC. DTE.

SK.EL-3962

Dt	16.6.89
D	
T	
C	

